



**Wiring & Installation Diagram
for
ST-25763 LOAD-PAK
Instruction Bulletin No. 27407**

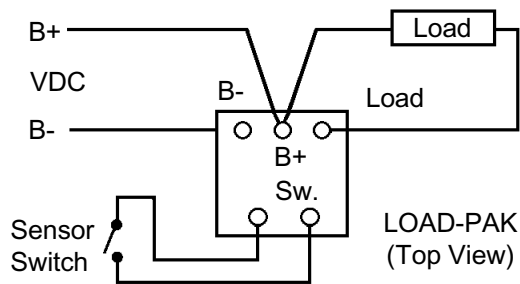
Wires connecting external sensor switches to LOAD-PAKS should not be placed in raceways or conduits containing high voltage lines. Voltages induced from these lines may trigger the low-power, solid-state triac; causing it to turn "on" momentarily.

LOAD-PAK P/N 25763 - 2 Amp, DC

Operating & Load Voltage Range	6 to 48 VDC
Voltage Loss	2 VDC
Sensor Current, Max.	35 mA
Allowable Resistance in Sensor Circuit to Turn "ON" (Max.)	0 to 4 kΩ
Leakage Current Thru Load Term.	2 mA
Switching Mode	SPST, N.O.
Operating Temperature	32°F to 120°F (0°C to 48.9°C)

Typical Wiring Diagram

LOAD-PAK, Part Number 25763, actuated by dry contact sensor to control load up to 2 amps, D.C.



P/N 27407
Rev C



Gems Sensors Inc.
One Cowles Road
Plainville, CT
06062-1198

tel 860.747.3000
fax 860.747.4244