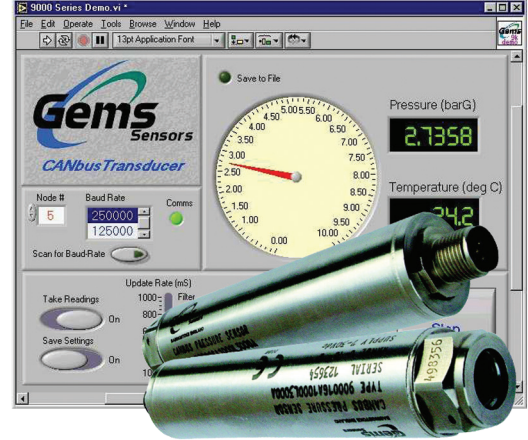


9000 Series CANbus Digital Output Pressure Transducer



- ▶ High accuracy over wide operating temperature range
T.E.B. $\pm 0.2\%$ Span, -40°F to $+185^{\circ}\text{F}$ (-40°C to $+85^{\circ}\text{C}$)
- ▶ Excellent Long Term Stability
 $<0.05\%$ per year, non-cumulative
- ▶ Small size: 25mm diameter, 120mm length
- ▶ Isolated high speed CAN interface - ISO11898
- ▶ Programmable update rate
- ▶ Standard application interface - CANopen DS301 & DSP404
- ▶ In system programmable
- ▶ Self diagnostics - bridge fault detection, hours in service, watchdog, last calibration date, next calibration date
- ▶ Unsurpassed customer support - Rapid Development Kit

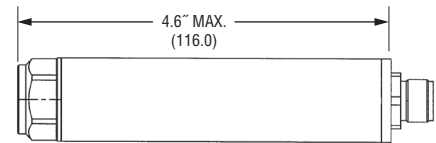


The 9000 CANBUS pressure transducer meets the demands of the test and measurement industry, including automotive and marine applications, with high levels of accuracy over a wide temperature range. The digital output in engineering units eliminates the need for user system calibration.

Designed to have a wide input voltage range, input to output isolation, immunity to noise and self-diagnostics the 9000 is ideal for electrically noisy environments or applications where earthing or grounding can be a problem.

Through the standard CANopen protocol multiple devices can be used on a single bus reducing user cabling.

Dimensions in. (mm)

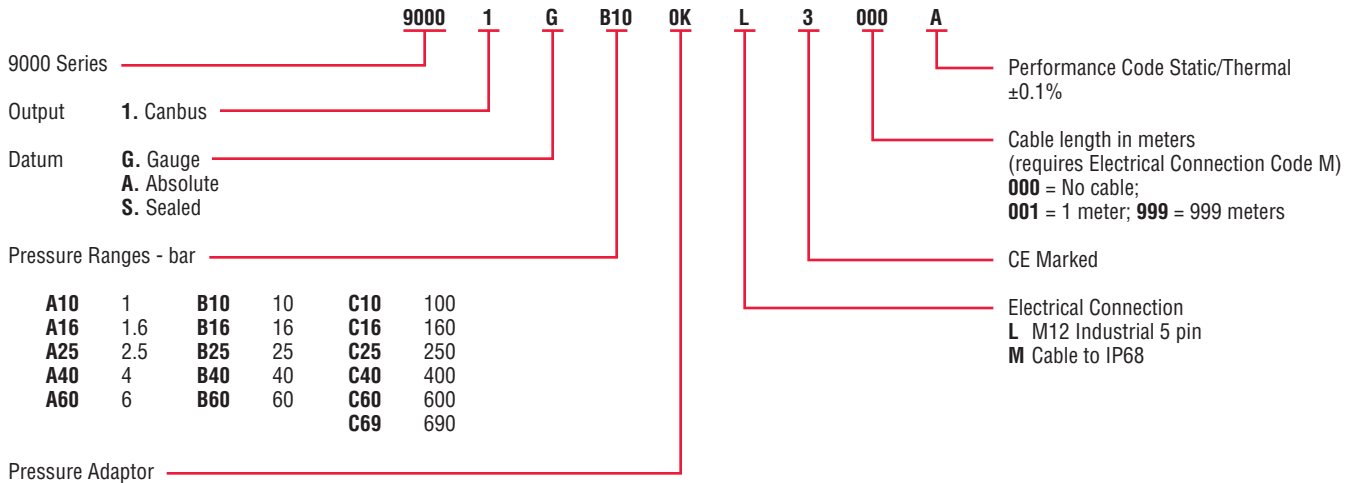


Specification

Input	
Pressure Range	0 to 1 - 0 to 690 bar
Proof Pressure	2 x FS (Inconel 1.5 x F.S.)
Burst Pressure	>35 x FS for ranges ≤ 87 psi (6 bar) >15 x FS for ranges ≥ 1450 psi (100 bar) >4 x FS for ranges ≤ 10007 psi (690 bar)
Supply Voltage	7-30 VDC
Performance	
Long Term Stability	Zero drift $<0.05\%$ Full range output non cumulative
Accuracy	$\pm 0.1\%$ Full Scale
Total Error Band	$\pm 0.2\%$ Full Scale
Compensated Temperature	-40°F to $+185^{\circ}\text{F}$ (-40°C to $+85^{\circ}\text{C}$)
Operating Temperature	-40°F to $+185^{\circ}\text{F}$ (-40°C to $+85^{\circ}\text{C}$)
Mechanical Configuration	
Pressure Port	(see table on next page)
Wetted Parts	17-4 PH or Inconel
Electrical Connection	5 pin M12 x 1, cable to IP68, others on request
Enclosure	SS
Vibration	$<0.08\%$ FRO/g 20Hz to 2000Hz, 35g
Shock	Withstands free fall to IEC 68-2-32 procedure 1
Approvals	CE Emissions EN 61000-6-4, Immunity EN 61000-6-2
Weight	<180 grams

How to Order

Use the **bold** characters from the chart below to construct a product code



Performance Code Static/Thermal $\pm 0.1\%$

Cable length in meters (requires Electrical Connection Code M)
000 = No cable;
001 = 1 meter; **999** = 999 meters

CE Marked

Electrical Connection
L M12 Industrial 5 pin
M Cable to IP68

Stainless Steel	Inconel	Description
OO	OK	G1/4 internal
AO	AK	G1/4 AT external
KO	KK	7/16-20 UNF-3A external
MO	MK	M14 x 1.5 external
PO	PK	G1/2 AT external
BO	BK	1/4-18 NPT external
GO	GK	1/2-14 NPT external
SO	SK	7/16-20 UNJF-3A, MS 33656F4

Accessories

Order Code	Description
557002	Restrictor Kit
499877-1000	Saddle Mounting Kit
562320-02M0	2m, unshielded, 5core, cable - Terminated to M12 male connector
562320-05M0	5m, unshielded, 5core, cable - Terminated to M12 male connector
562321	Rapid Development Kit - including 9V battery, M12 to 9 way D type cable terminated assembly, USB to CAN Interface, Gems start up CD ROM
562293	User manual